

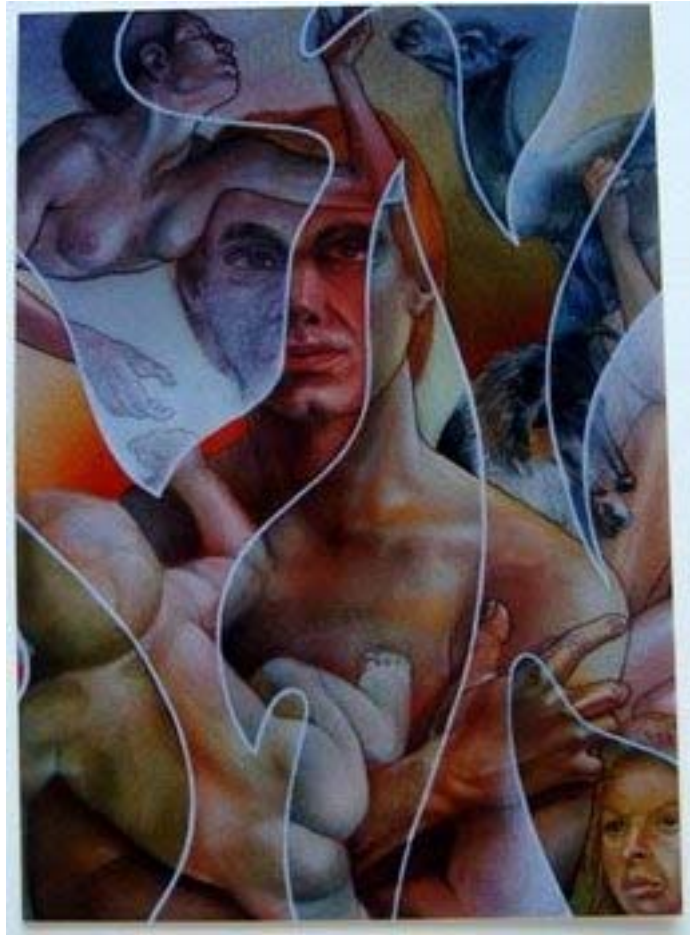
Alex WAGNER - *from a private collection in Germany*



Figures based on "The coming of famine" – leather + string - *ref* 1953+1954



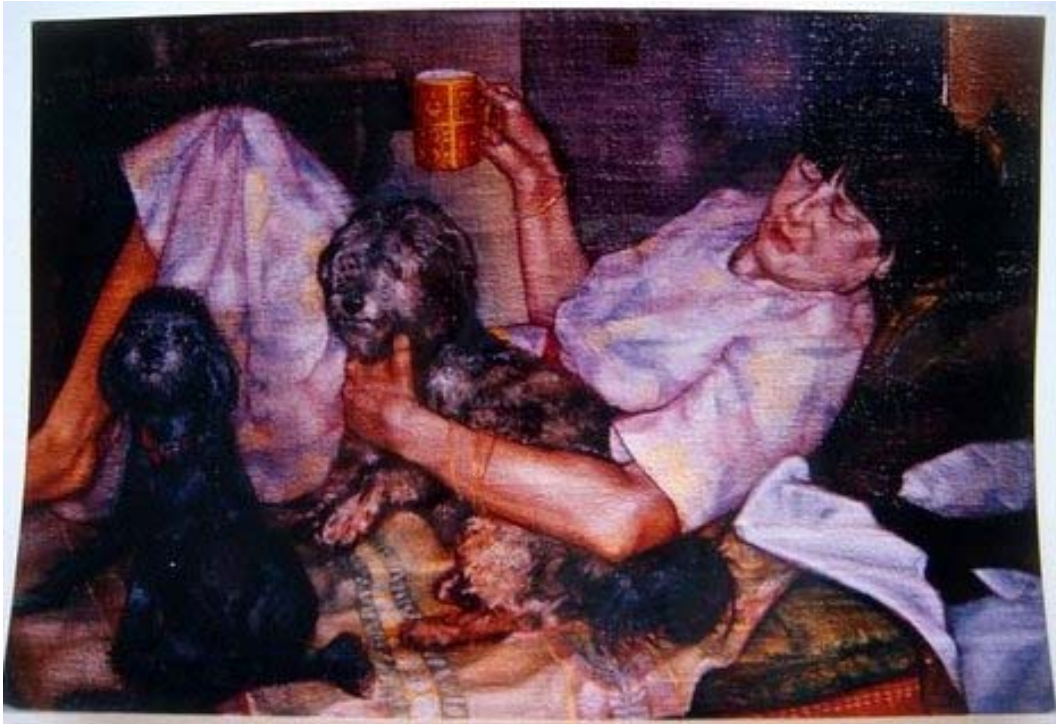
"Carnival" – mixed media (modeling paint, string) – *ref*. 1956+1957



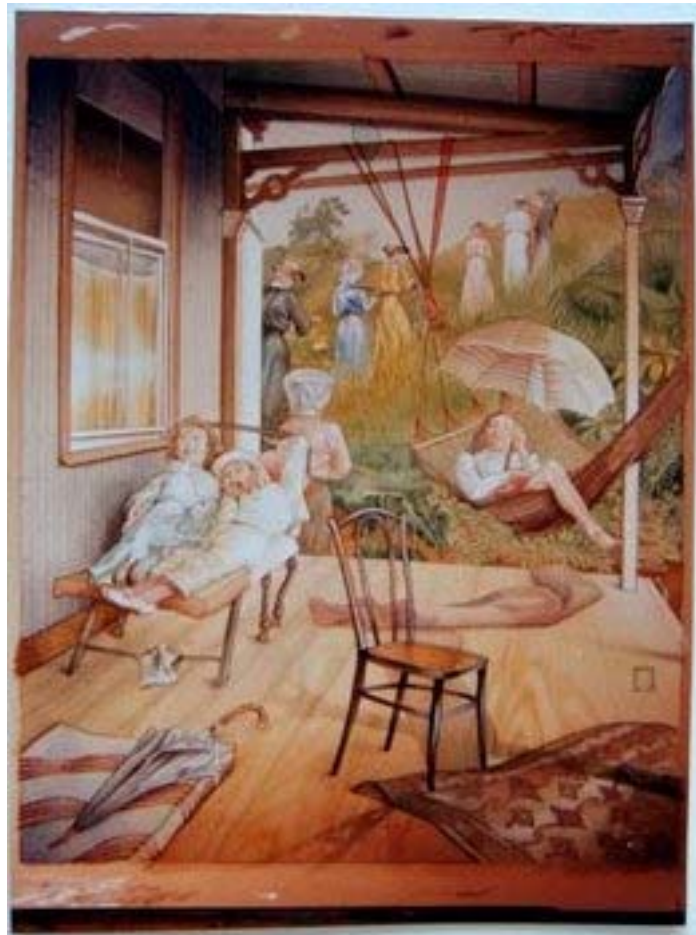
"The Sea of Brahma" (detail) – ref. 1960+1961



"Personal Projection", 1966 – gouache and ink (old farmhouse in Greytown) – ill. in ARTLOOK 34, September 1969, p. 11



"Beryl Newman" ref, 1967+1968



"The wise virgins" – watercolour depicting a verandah of a typical wood and iron house built early 19th Cent. Natal

Return to <http://www.art-archives-southafrica.ch/WAGNER.htm>