

JOHANNES MEINTJES

in the

WILLEM ANNANDALE ART GALLERY,
LICHTENBURG - Ditsobotla

A selection of 4 out of 13 works from this Collection is shown



Left: "Stilllife with Mapog beadwork", 1968

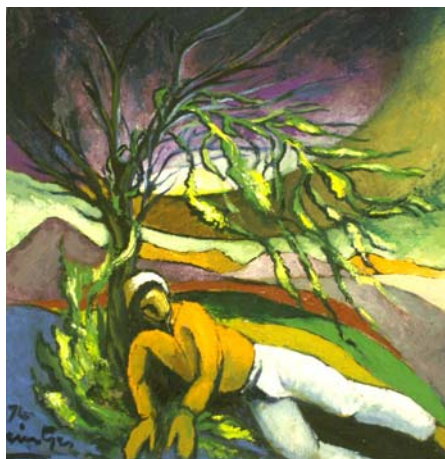
Oil on board – 500x200 mm – JM Register #959

Middle: "The empty chairs", 1969

Oil on board – 450x335 mm – JM Register #998

Right: "Girl with birds", 1970

Oil on board – 410x100 mm – JM Register #1021



"Reclining figure against tree", 1974

Oil on board – 610x610 mm – JM Register #1158

Further images from the Meintjes [archivist](http://www.art-archives-southafrica.ch/MEINTJES.htm) or <http://www.art-archives-southafrica.ch/MEINTJES.htm>